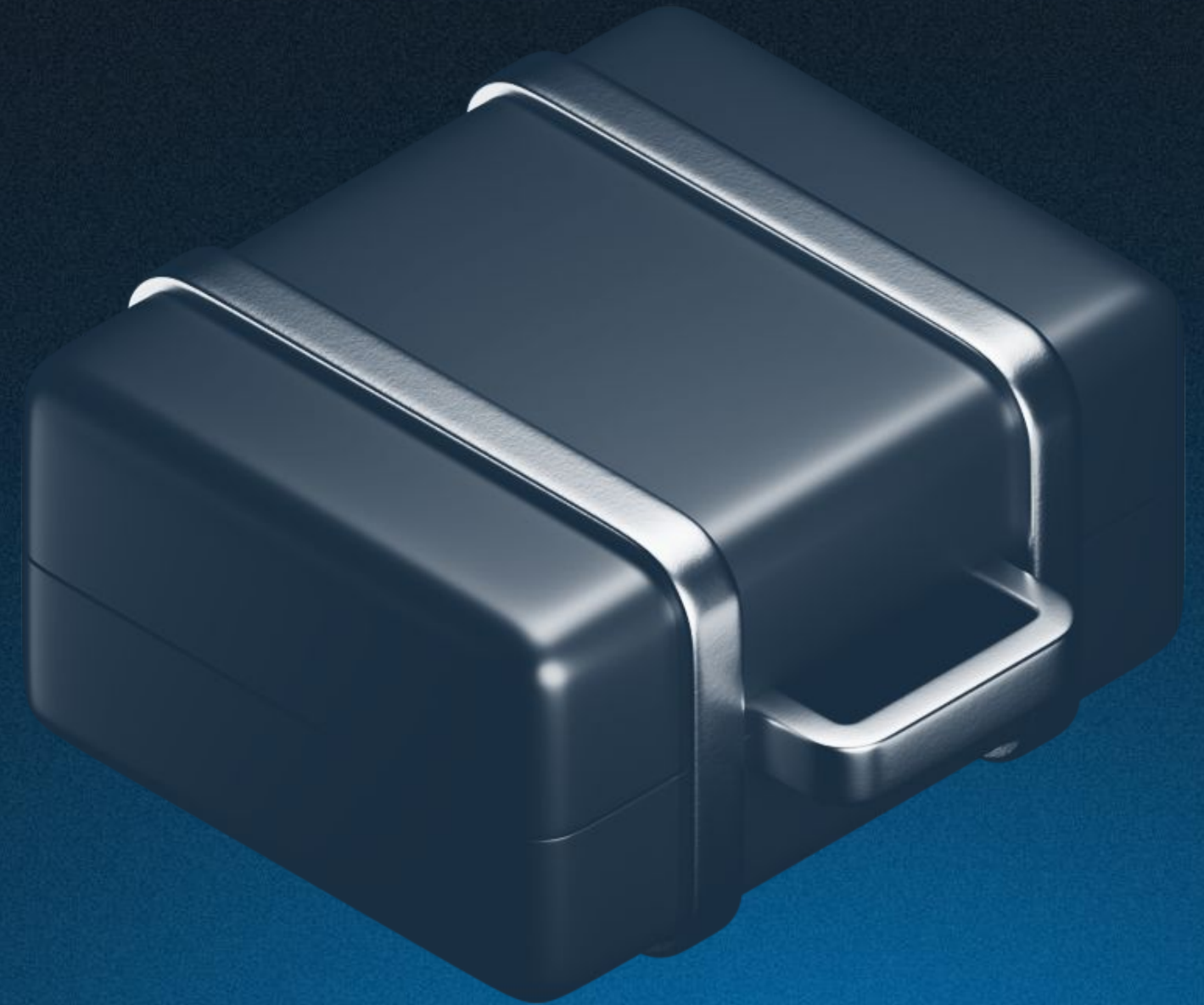


//ispmanager

Partner program for hosting providers. For those who want to earn more

Ispmanager



01

Web developers

02

Administrators

03

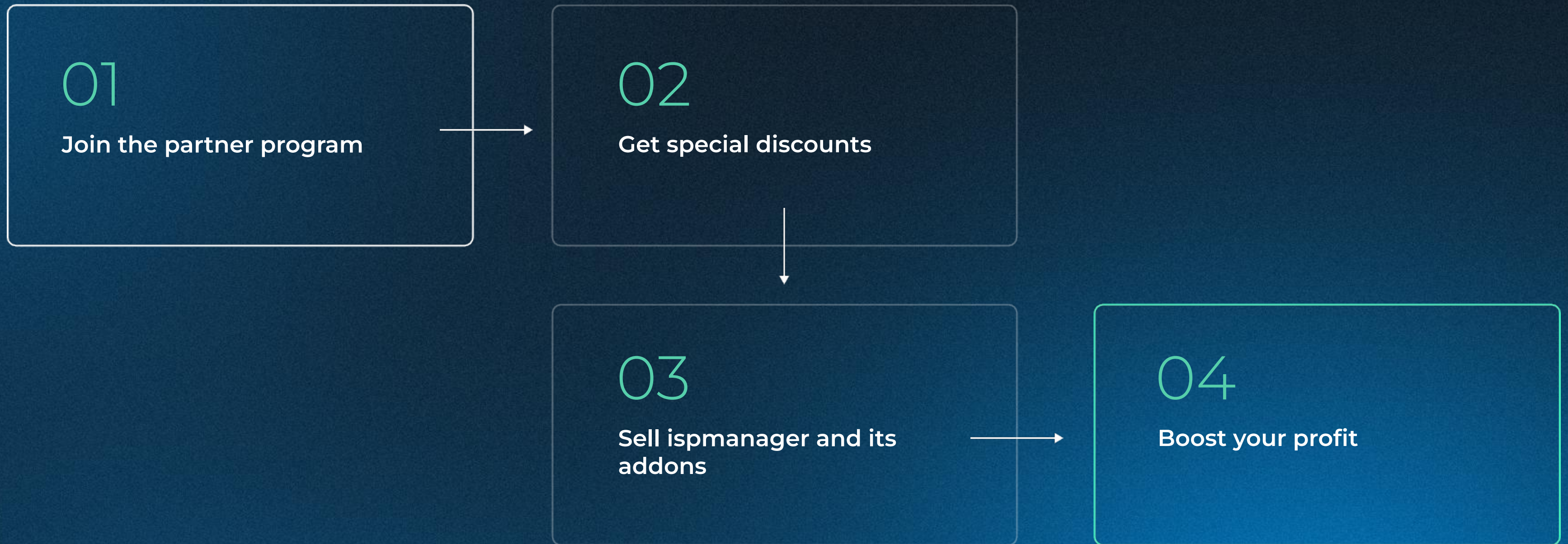
Website owners

Ispmanager is a server and website control panel

ispmanager has tens of thousands of active
users in 150 countries

Join our partner program to make them your
clients

Earn with ispmanager



What the ispmanager partner program includes

| ispmanager license discounts up to 60% | Ability to sell paid modules | SSL certificates discount of 20% | Marketing support |
|---|---|--|--|
| <p>Partners only pay for activated licenses. Deferred payment up to 30 days</p> | <p>ispmanager includes paid extensions for users. Partners can set their own prices and sell them, increasing the average sale amount</p> | <p>We cooperate with all popular certification centers</p> | <p>We provide promotional materials, launch joint promotions, and invite to webinars</p> |

Two types of partner program

| For hosting providers | For resellers |
|--|--|
| You can sell licenses to be installed only on the hosting provider's servers | You can sell licenses to be installed on any servers |
| License discounts up to 60% | License discounts up to 40% |
| SSL certificates discounts of 20% | SSL certificates discounts of 20% |
| Deferred payment up to 30 days | Deferred payment up to 30 days |

Partner program for hosting providers

| Partner level | Starter | Premium | Silver | Gold | Platinum |
|--|---------|---------|--------|-------|----------|
| Minimum required turnover (month), EUR | 100 | 200 | 500 | 1 000 | 3 000 |
| Discount, % | 20 | 40 | 50 | 55 | 60 |
| SSL certificates discount, % | 20 | | | | |
| Special prices for additional ispmanager modules | Yes | | | | |

Partner program for resellers

| Minimum required turnover, EUR | 100 | 500 | 1 000 | 3 000 | 5 000 | 8 000 | 10 000 |
|--------------------------------|-----|-----|-------|-------|-------|-------|--------|
| Discount, % | 10 | 15 | 20 | 25 | 30 | 35 | 40 |
| SSL certificates discount, % | 20 | | | | | | |

Types of ispmanager licenses and prices for users

| To manage VPS/VDS, servers and websites | | | For shared hosting |
|--|--|-----------------------------|--|
| Lite | Pro | Host | Business |
| Up to 10 domains | Up to 50 domains | Unlimited number of domains | Billed by the number of servers |
| For developers, website administrators and owners, web studios | | | Hosting providers and large web studios |
| Management of: - web server - websites - mail | - databases - DNS - SSL certificates | | Hosting setup: - server cluster management - reselling setup - setting RAM and CPU limits for users |
| € 5 per month | € 10 per month | € 15 per month | € 20 per month |

Why clients will want to use ispmanager

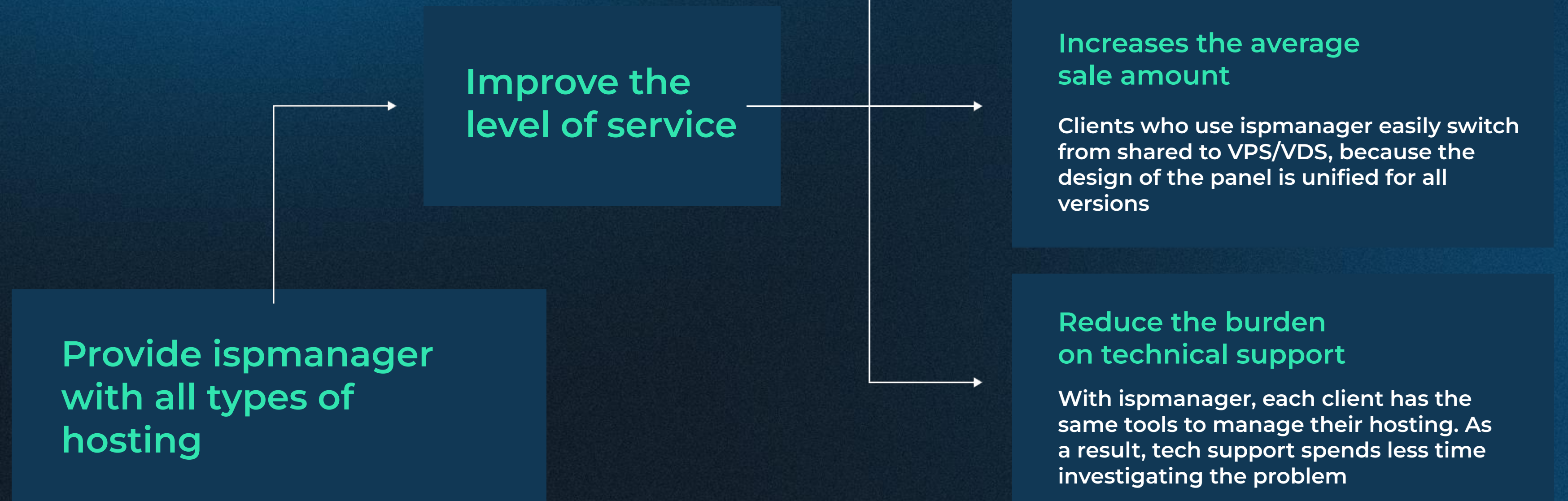
Tens of thousands of users in 150 countries are familiar with ispmanager

Its intuitive interface is understandable even to a beginner

The panel helps to solve even complex problems

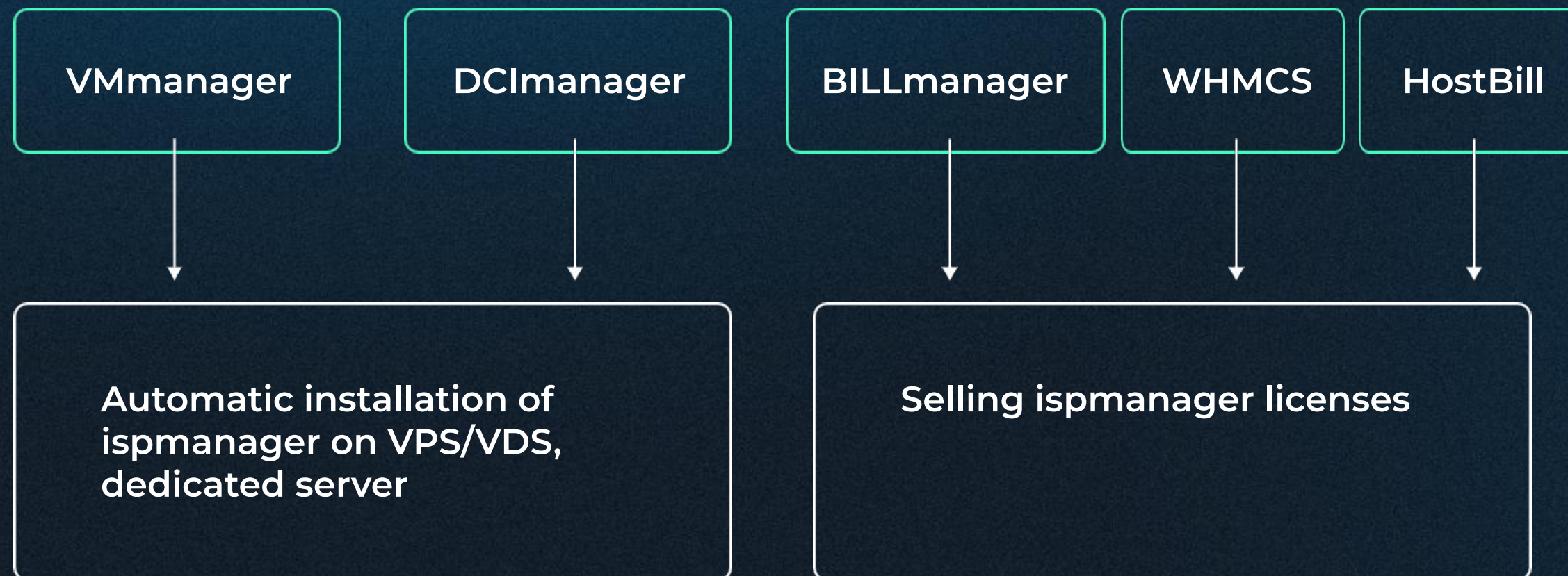
Free technical support is available 24/7

Better service is yet another advantage of ispmanager for hosting providers

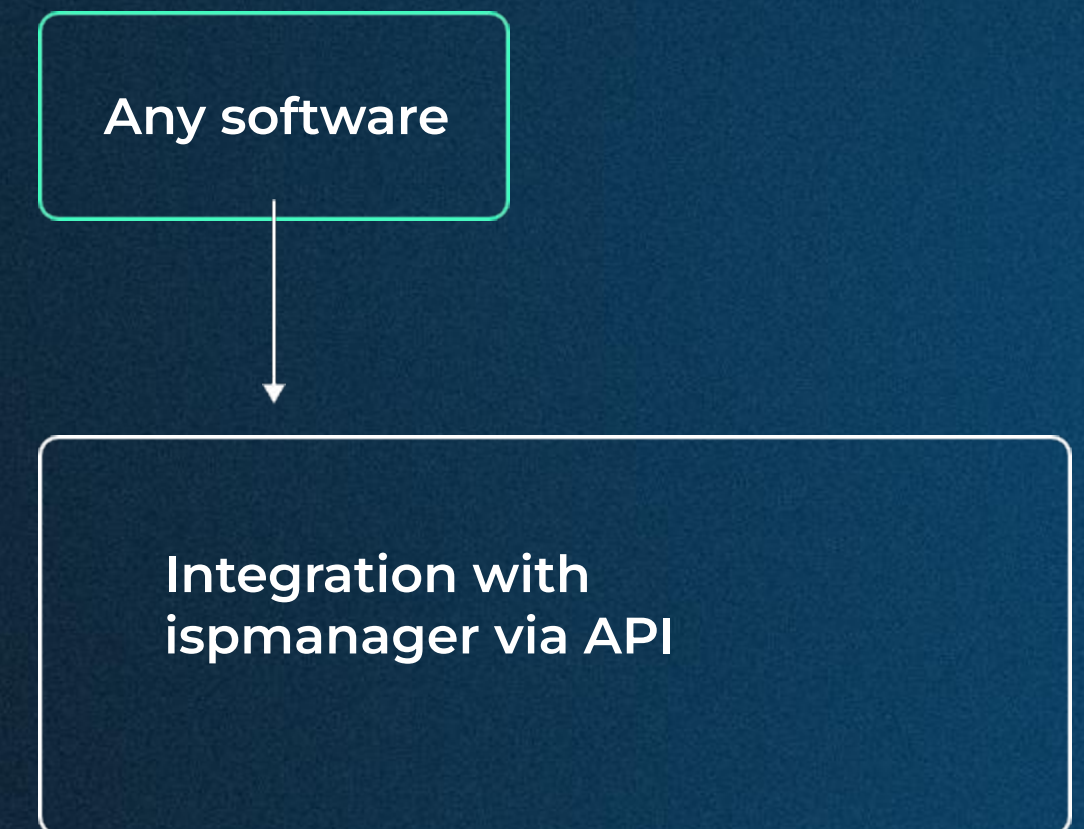


ispmanager can be easily integrated with other hosting solutions

Third-party software integration modules



Open API



About ispmanager

ispmanager is a developer of a panel for managing web services. In April 2022, the company separated from ISPsystem to focus on the hosting and web development market

18+

years on the market

Extensive experience in software development. During this time, we have created 6 major versions of ispmanager

10 000+

corporate clients

ispmanager successfully works in any business - from hosting providers to retail and logistics

150+

countries, where our solutions are used

Active ispmanager users can be found anywhere in the world. All services are available in English: documentation, support, interfaces

Get to know ispmanager

Learn more about ispmanager without installing it through an online demonstration or test it on your own equipment

Run demo panels right now

Instantly, no software installation required

[Run demo](#)

[Documentation for ispmanager Lite, Pro, Host](#)
(web programmer versions)

[Technical documentation for ispmanager Business](#)
(hosting provider version)

Test ispmanager on your own equipment

Free for 14 days

[Get a trial version](#)

ispmanager saves resources of equipment.
Minimum server requirements:

1 CPU
1024 Mb RAM
10 Gb disk space.

Runs on CentOS, AlmaLinux, Ubuntu, Debian



//ispmanager

**We are always
online for you!**

Our team will be happy to show,
explain more or answer your
questions!

Ilya Zyuzukin

Key account manager

i.zyuzukin@ispmanager.com

Maxim Darulis

Head of Sales and Marketing

m.darulis@ispmanager.com